



www.inoxmecc-valves.com

CUSTOMIZED AND HIGHLY EFFECTIVE SOLUTIONS

INOXMECC Valves & Fittings is the manufacturing Division specialized in the design and manufacture a wide range of **instrumentation valves** with dedicated configurations, suitable to meet specific customer needs while ensuring tailored functionality and maximum reliability. Each product is designed and developed by the **internal technical department** with the use of austenitic stainless-steel alloys, with the possibility of having exotic materials for the most severe applications.



Oil and Gas Europe



Company with quality environment
and safety system-certification
N. IT262042 - N.IT268343 - N. IT 300458

6A - 1186
Licensed for
Ring Gaskets

Instruments Products

- *Needle Valves*
- *Manifold Valves*
- *Check Valves*
- *Instruments Ball Valves*
- *Monoflange Valves*
- *DBB Valves*

Fittings Products

- *Sealant*
- *Check*
- *Bleeder*

High Pressure Products

- *HP Valves*
- *HP Accessories*
- *HP Adapters*
- *HP Seamless Tubings*
- *Liquid Pumps*
- *Gas Boosters*
- *Systems*

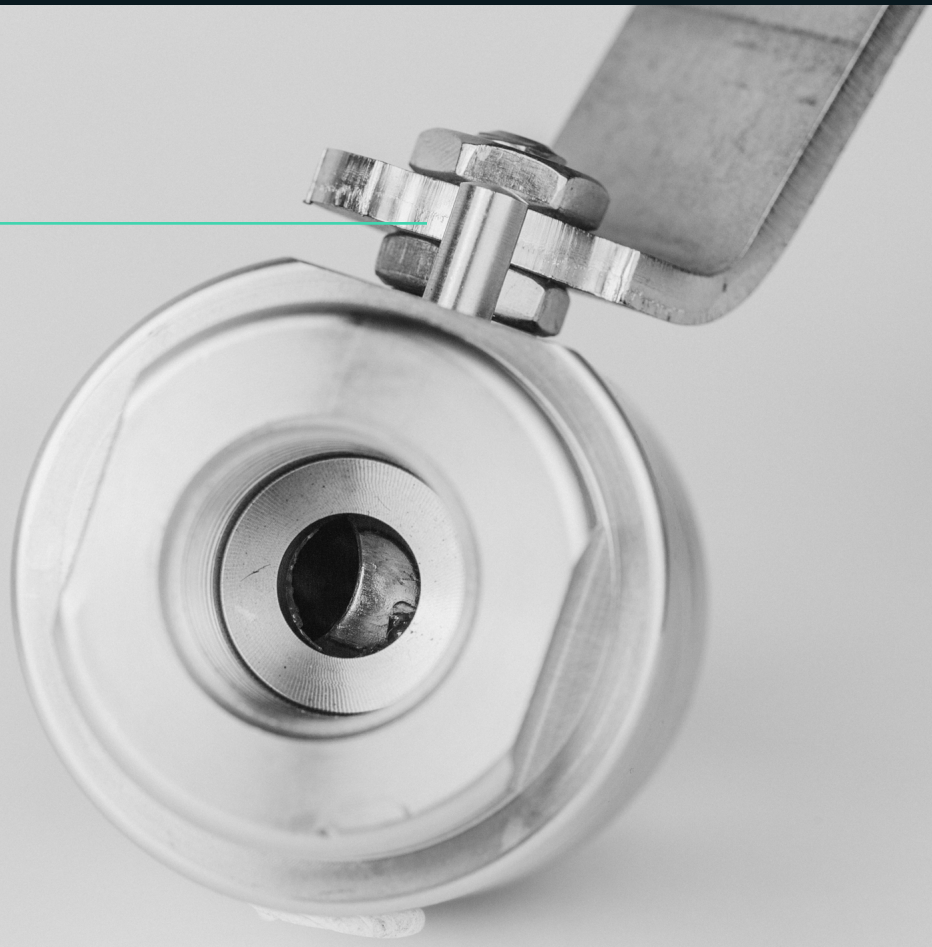
The skilled know-how is the benefit of this Business Unit, which is able to produce high-quality finished products, starting from the **Project Management** to the packaging and shipping to end customers.

Our target: to be a dynamic and flexible partner for our Customers thanks to the **high quality engineering** heritage, that is the result of the consolidated experience in the control valves together with the large background of the other Group's Divisions.

Our Valves & Fittings Division represents one of the most reliable interlocutors on the market, able to give a prompt response to the needs of its clients.

Thanks to our **internal technical department** we are able to supply complete products design to support our customers projects.

We are equipped to perform all the **special tests** necessary for product validation and prototyping, i.e: GAS leak tests, High temperature, Cryogenic, Cyclic tests



START FROM A SIMPLY IDEA ACHIEVING A HIGH-TECH PRODUCT

There is a common point of view between us and our partners-manufacturers and this is the way in which each product is born and developed from a simple idea. The products are conceived by their creators' intelligence and ability to hand over their knowledge to engineers and professionals who will design and make the product. Thanks to the synergy between its designers and developers, Italian companies are appreciated all over the world and have become leading lights in the industry.

INOXMECC Valves & Fittings Division provides constant innovation, efficient processes, the careful choice of certified raw materials, a large investment in research, the conformity with the most important regulations, granting to our Partners the highest quality capable to compete with lots of companies in the **Oil & Gas field**.



We are the perfect Partner to support the achievement of your goals



THE RIGHT CONNECTION FOR YOUR INSTRUMENTS

Bar stock needle valves

Inoxmecc Valves & Fittings Instrumentation Valves are designed for mounting to Pressure Gauges, Pressure Transmitters and Pressure Switches. The standard types are equipped with a bleed screw. A diverse range of options and the relevant accessories are available.

Bar stock manifolds

Inoxmecc Valves & Fittings offer a variety of 2-3 and 5 valve instruments manifolds in direct and remote mount style with vent.

Check valves

The check valves are used to avoid contamination in the purge systems or to protect the measuring and controlling instruments



Features:

- Bar stock with outside screwed bonnet
- Threaded, socket welding and flanged
- Nominal operating pressure:
6,000 psi (413 bar) - 10,000 psi (689 bar)
- Packing material PTFE / GRAPHOIL
- Connections: from 1/4" to 1"
- Standard material 316/316L
- Other material upon request

Instruments ball valves

INOXMECC Valves & Fittings three piece simple ball valve is designed to provide higher strength



Features:

- Rating 6.000 psi (414 bar) or 10.000 psi (689 bar)
- PEEK packing standard
- Temperature rating from -40°C / +260°C (104°F / + 500°F)
- Standard material 316/316L
- Connections from 1/4" to 1"
- Locking Device option also available

Monoflange Valve

For direct and close mounting to the flange connection of process isolating valves on horizontal and vertical pipe lines. Compact block, block and bleed, double block and bleed



Features:

- ANSI B16.5 flanges from 1/2" to 2"
- Instrument connections 1/2" NPT ANSI B1.20.1
- Drain connection 1/4" NPT ANSI B1.20.1
- Rating from 150 lbs to 2500 lbs
- Standard material 316/316L
- Other material upon request

Double Block & Bleed Valves

INOXMECC instrumentation products provide the ultimate suitable solutions for an integral block & bleed valve, which consists of one piece forged body. It provides lots of benefits, featuring a choice of end.

Features:

- ANSI B16.5 flanged from 1/2" to 2"
- Instrument connections 1/2" NPT ANSI B1.20.1
- Drain connection 1/2" NPT ANSI B1.20.1
- Rating from 150 lbs to 2500 lbs
- Standard material 316/316L
- Other material upon request



HIGH PRESSURE COMPONENTS

Pressure up to 60,000 psi (41378bar)

High-Pressure Valves and accessories designed for liquid and gas flow control

- High Pressure Valves
- Accessories
- Adapters
- Seamless Tubings

Features:

- Pressure range 15,000 – 60,000 psi
- Available with NPT connections from 1/4" to 1/2"
- Available with MP/HP connections
- Standard materials AISI 316L and PTFE
- Non rotating stem prevents galling and seal wear



COMPRESSION SYSTEMS

Air Driven Liquid Pumps

The INOXMECC Single/Double Acting is an air operated liquid pump for pressure testing, chemical injection and hydraulic power. It is characterized for compact size, minimal weight and it can operate in lots of environments.

Pressure up to 100,000 psi (6890 bar)

- Wide selections of models, pressure ranges and flows
- Compact and innovative design
- Sturdy and easy to maintain



Frame configuration

All INOXMECC Liquid Pumps and Gas Boosters can be installed on stainless steel frames or portable cases, in order to be easily transportable.

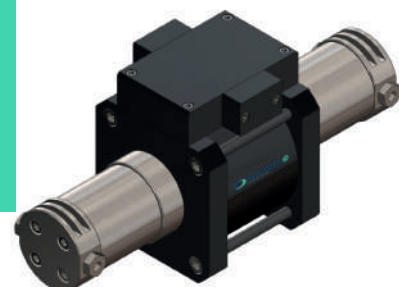


Gas Boosters

Flexible and efficient air-driven gas boosters for delivering high-pressure gases. The INOXMECC gas boosters operating principle is similar to a pressure intensifier. A large air piston is charged with a low pressure (air piston) and works on a small area with (high pressure piston).

Pressure up to 30,000 psi (2068 bar)

- Innovative features of gas boosters.
- Integrated system of internal pass-a-gas obtained in the manifold valve.
- Drastic reduction of maintenance.
- Innovative cooling system.
- Complete separation between the drive side and the high pressure side.





www.inoxmeccgroup.com

www.inoxmec-valves.com
sales@inoxmecc-valves.com

